

## Japan Platform

We are an international NGO which offers emergency humanitarian aid from Japan in response to the issues of refugees and natural disasters.

### Your Regular Support to Japan Platform is Greatly Appreciated

At Japan Platform (JPF), our activities are supported by your generous donations. The displaced people by conflicts and natural disasters are increasing around the world, and humanitarian crises are becoming more complex, large-scale, and prolonged. In recent years, large-scale natural disasters have been occurring frequently. Please help us deliver aid to those who need it now, as quickly as possible, and to prepare for future disasters and humanitarian crises.

#### 1 General Donations



You can donate as much as you can, whenever you like.  
<https://www.japanplatform.org/support/donation/once.html>

#### 2 Monthly Supporter Program for Continuing Support



Starting from 30 yen per day (1000 yen per month)  
<https://www.japanplatform.org/support/donation/monthly.html>

•Donating to a particular aid programme is also available. Please visit our website for more details.

## Japan Platform

[Tokyo Office]  
 Kojimachi GN Yasuda Building 4F, 3-6-5 Kojimachi, Chiyoda-ku,  
 Tokyo 102-0083, Japan  
 ☎ +81-3-6261-4750 FAX : +81-3-6261-4753

[Tohoku Office]  
 Sendai Matsui Building 6F, 2-14-24 Kokubuncho,  
 Aoba-ku, Sendai-shi, Miyagi 980-0803, Japan

#### Official Accounts

[www.japanplatform.org](http://www.japanplatform.org)



@japanplatform





## Who we are?

### “Platform for civil society” to realize partnerships and collaboration among diverse people to deliver Japan’s aid

Since our founded in 2000, Japan Platform have operated a structure for individuals, private sector, NGOs, and the government to work together as equal partners in order to deliver humanitarian assistance from Japan.

Our functions as a platform which the four parties collaborate by leveraging their strengths and resources to deliver Japanese aid quickly and effectively to people who are suffering from natural disasters, refugees and internally displaced persons due to conflicts.

### Our Vision

To expand Japanese assistance globally  
and create a world where all individuals can open a path to the future.

#### Cooperation for effective assistance

Assembling the wisdom of NGOs, the government of Japan, business communities, and intellectuals and forming a platform to practice effective operation, to provide sustainable and optimal assistance to beneficiaries.

#### Support for the self-reliance of affected people

Building a society where people with different backgrounds can live together under the spirit of coexistence and self-reliance.

#### Leadership for NGO activities in humanitarian assistance

Acting as a central role domestically and internationally to achieve assistance to promote the role model of NGO aid in Japan.

### Leave No One Behind People who need aid

(Affected people of natural disasters, refugees and internally displaced persons due to conflicts.)

Water Supply, Sanitation and Hygiene Promotion

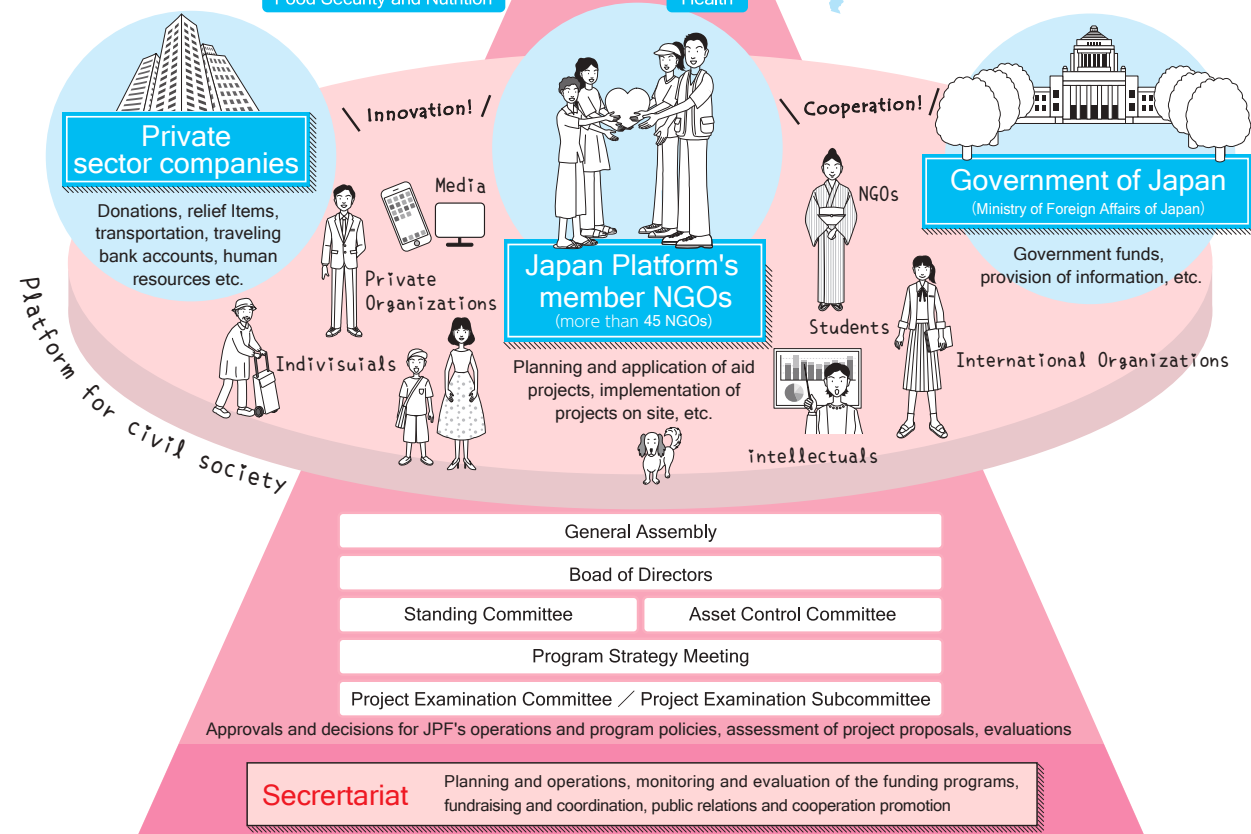
Food Security and Nutrition

Non-Food Items and Shelter

Health

Early Recovery

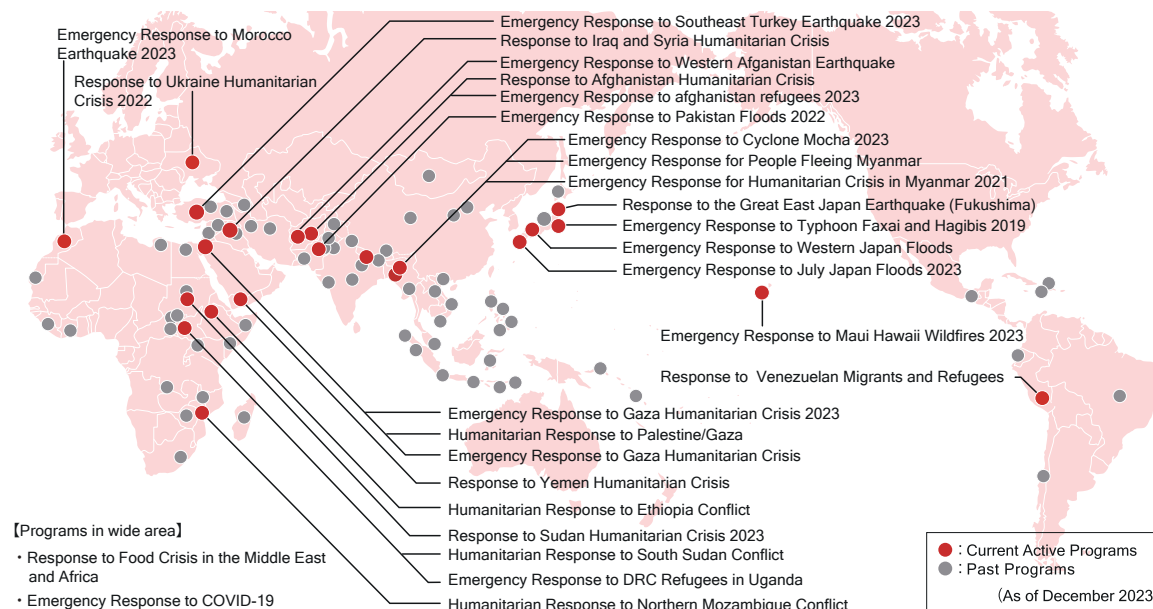
Education, Mental Health, and Psycho-social Support



## Our programs

### Japanese emergency humanitarian aid in line with local conditions and people's needs reaching destinations throughout the world

Japan Platform has supported the aid activities of more than 45 member NGOs, each with its own set of diverse strengths. In line with local conditions and people's needs, we have delivered humanitarian assistance to more than 60 nations and regions over 2,100 projects, with a total financial contribution of 84 billion yen. We have built a reputation based on trust by cooperation among our member NGOs and by fulfilling accountability for our activities.



#### Response to Ukraine Humanitarian Crisis 2022 (Mar. 2022-)



Support for settlement of Ukrainian refugees in Slovakia (language classes for college admission) ©IVY (Partner organization SME SPOLU)

#### Emergency Response to Pakistan Floods 2022 (Sep. 2022-)



Children playing in front of the distributed tents ©KnK

#### Emergency Response to Southeast Turkey Earthquake 2023 (Feb. 2023-)



Delivering emergency receiving relief supplies, Arsu on Feb.9 ©Peace Winds

#### Response to Food Crisis in the Middle East and Africa (Oct. 2022-)



Cash transfers assistance to empower people with choice to address their essential in local markets ©CWS

#### Response to Iraq and Syria Humanitarian Crisis (Nov. 2012-)



Students happily receiving stationery and bag sets ©PARCIC

#### Response to the Great East Japan Earthquake (Fukushima) (Mar. 2011-)









Community revitalization assistance connecting returnees and immigrants through the local equestrian culture promotion, Soso district, Fukushima

Details of Our Aid Programs



## NGO Unit (JPF member NGOs)

We collaborate and share information with our member NGOs, each of which has its own areas of expertise, to provide assistance that is rooted in the needs of affected people and refugees.

 <b>AAR Japan</b> 協賛NPO法人 被災者を助ける会	<b>AAR</b> Association for Aid and Relief, Japan	 <b>ACCEPT</b> Accept International	 <b>ADRA</b> ADRA Japan
	<b>BHN</b> BHN Association		 <b>CIJ</b> CARE International Japan
 たった一人のために、世界をつなぐたいし。	<b>CWS</b> CWS Japan		 <b>FL</b> Frontline for a peaceful & healthy world
	<b>FMYY</b> Radio FMYY		 <b>HFHJ</b> Habitat for Humanity Japan
	<b>HOPE</b> HOPE International Development Agency		 <b>ICAN</b> International Children's Action Network
	<b>IVY</b> IVY		 <b>JAFA</b> Japan Asian Association and Asian Friendship Society
	<b>JCF</b> Japan Chelnoyl Foundation	 日本カーシェアリング協会 Japan Car Sharing Association	 <b>JEN</b> JEN
	<b>JH</b> International Medical Volunteers Japan Heart		 <b>JRA</b> Japan Rescue Association
	<b>JRCS</b> Japanese Red Cross Society		 <b>KnK</b> KnK Japan
	<b>MdM</b> Medecins du Monde Japon		 <b>OBJ</b> Operation Blessing Japan
	<b>PARCIC</b> PARC Interpeoples' Cooperation		 <b>PLAN</b> Plan International Japan
	<b>PW</b> Peace Winds Japan		 <b>REALs</b> Reach Alternatives
	<b>RJP</b> RESULTS Japan		 <b>2hj</b> Second Harvest Japan
	<b>SEEDS</b> SEEDS Asia		 <b>SPJ</b> SDGs Promise Japan
	<b>SVA</b> Shanti Volunteer Association		 <b>tasukeai</b> tasukeai haiki 0
	<b>VAN</b> Voluntary Architects' Network		 <b>WVJ</b> World Vision Japan

# Organization

Name	Japan Platform [Specified Nonprofit Corporation]	
Founded	August 10, 2000	
Operation Summary	<p>We provide prompt and effective humanitarian aid at various international and domestic sites for affected people of natural disasters and those who have become refugees as a result of conflicts.</p> <p>To this end, NGOs, the government of Japan, business communities, and intellectuals come together in partnership, and aid activities are implemented under coordination and cooperation that make the most of each party's characteristics and resources.</p>	
Accomplishments	<p>Since our foundation in 2000, JPF has delivered humanitarian aid to more than 60 countries / regions, over 2,100 programs totaling 84 billion yen.</p> <p>Afghanistan, Bangladesh, Brazil, Burkina Faso, Cambodia, Chad, Chile, China, Cyprus, Democratic Republic of the Congo, Djibouti, East Timor, Ecuador, Eritrea, Eswatini, Ethiopia, Guatemala, Haiti, Hawaii, India, Indonesia, Iran, Iraq, Israel, Japan, Jordan, Kenya, Laos, Lebanon, Lesotho, Liberia, Madagascar, Malawi, Mauritania, Moldova, Mongolia, Morocco, Mozambique, Myanmar, Nepal, Niger, Pakistan, Palestinian Territories, Peru, Philippines, Poland, Romania, Sierra Leone, Slovakia, Solomon Islands, Somalia, South Africa, South Sudan, Sri Lanka, Sudan, Syria, Tajikistan, Thailand, Turkey, Uganda, Ukraine, Uzbekistan, Vanuatu, Venezuela, Vietnam, Yemen, Zambia, and Zimbabwe.</p>	
Board of Directors	Co-Chairpersons	
	<b>Yoshitaka Akimoto</b>	General Affairs Official, Imperial Household Agency (Former) Grand Master of the Ceremonies, Imperial Household Agency (Former) Ambassador of Japan to Australia
	<b>Yasuhiro Ueshima</b>	Secretary General, Peace Boat Disaster Relief
	Executive Directors	
	<b>Motomichi Ikawa</b>	Member of the Board, Kuni Umi Asset Management Co. Ltd.
	<b>Hikaru Ishikawa</b>	CEO, Deeper Travel Inc.
	<b>Misao Eddy</b>	Senior Advisor, Japan Women's University
	<b>Kazuyuki Kinbara</b>	President & CEO, KK Associates
	<b>Sho Sato</b>	Secretary General, International Medical Volunteers Japan Heart
	<b>Akinori Suzuki</b>	Secretary General of Yahoo Japan Foundation
	<b>Hiromi Tengeji</b>	Office Head, ESG Promotion Department, LY Corporation
	<b>Shusai Nagai</b>	Representative Director, Kopernik
		Specially-appointed Professor, Graduate School of Management, Kyoto University
		Senior Research Fellow, Research Center for Innovation Management, Ritsumeikan University
		(Former) Managing Executive Officer, Mizuho Holdings, Inc.
	<b>Keiko Hamada</b>	Journalist
	<b>Yoshiteru Horie</b>	President, AAR Japan
	<b>Akiko Horiba</b>	Senior Program Officer, Peacebuilding Program, The Sasakawa Peace Foundation
	Auditors	
	<b>Kazuyuki Shinada</b>	Certified Public Accountant
	<b>Hidetaka Tanaka</b>	Member of the Board (Director / Auditor), Sun Frontier Fudousan Co., Ltd.
	Senior Advisers	
	<b>Noboru Ishizaki</b>	Senior Adviser, NetLearning Holdings, Inc.
	<b>Nobuyuki Koga</b>	Honorary Advisor, Nomura Holdings, Inc.
	<b>Mayo Shono</b>	Singer-songwriter
	<b>Sadahiko Sugaya</b>	Chairman, Watanabe Gakuen Educational Institutions, Tokyo Kasei University
	<b>Kanji Tanimoto</b>	Professor, Dr., School of Commerce, Waseda University
	<b>Nobutaka Murao</b>	Professor, Kwansei Gakuin University
	<b>Hajime Yoshitake</b>	Audit & Supervisory Board Member, TAIYO YUDEN CO., LTD
	Standing Committee	
	<b>Yoshitaka Akimoto</b>	General Affairs Official, Imperial Household Agency (Former) Grand Master of the Ceremonies, Imperial Household Agency (Former) Ambassador of Japan to Australia
	<b>Motomichi Ikawa</b>	Member of the Board, Kuni Umi Asset Management Co. Ltd.
	<b>Yasuhiro Ueshima</b>	Secretary General, Peace Boat Disaster Relief
	<b>Misao Eddy</b>	Senior Advisor, Japan Women's University
	<b>Kazuyuki Kinbara</b>	President & CEO, KK Associates
	<b>Megumi Kuwana</b>	Associate Professor, Faculty of International Studies, Kindai University
	<b>Akiko Horiba</b>	Senior Program Officer, Peacebuilding Program, The Sasakawa Peace Foundation
	<b>Toshio Matsuda</b>	Director, Non-Governmental Organizations Cooperation Division International Cooperation Bureau, Ministry of Foreign Affairs
	<b>Rika Yamamoto</b>	Director, Program Department, Peace Winds Japan
	<b>Takeharu Takahashi</b>	Secretary General, Japan Platform
	Adviser to Standing Committee	
	<b>Kazuto Sasaki</b>	Project General Manager, International Division, The Japan Chamber of Commerce and Industry / The Tokyo Chamber of Commerce and Industry