

JPF Flash Report: Kumamoto Earthquake

JPF-NGO Emergency Response to Earthquake in Kyushu [May 1, 2016]



Overview

(As of May 1, 11:30AM)

[Deaths] 66 persons (including 17 deaths due to post-quake deterioration of injuries & illness)

[Evacuation Shelters] 409 (in 27 municipalities)

[Evacuees] 23,246 persons

[Damages] 40,039 housing structures (incl. full/partial destruction & damages)

[Water Outage] About 11,500 households
**Some areas are still without running water*

[Schools] Damages (on water pipes, walls, etc.) at:
- 41 (of total 54) prefectural public high schools
- 14 (of total 17) public special education schools
- 317 public elementary and junior high schools in 27 municipalities
**25 public schools in Kumamoto Prefecture cancelled classes through May 9 or later*

References (in Japanese):
- Reports from the Government's Response Headquarters Meeting & Kumamoto Prefecture Disaster Headquarters Meeting (April 30, 4:20 PM)
- On Kumamoto Earthquake damages (May 1, 11:30 AM)
http://www.pref.kumamoto.jp/bin/kya/pub/default.aspx?c_id=9
http://www.pref.kumamoto.jp/bin/kya/pub/default.aspx?c_id=9

The magnitude-6.5 foreshock at 9:26 p.m. on April 14 and the magnitude-7.3 main shock at 1:25 a.m. on April 16 have caused great damages in Kumamoto Prefecture as well as in neighboring Oita Prefecture. Even though there are fewer aftershocks now, the surviving residents are still spending sleepless nights in uncertainty.

Conditions as of April 30

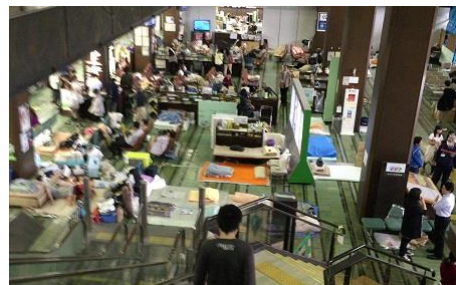
Thus far, 66 persons have died and one person is still missing. 17 people who survived the main quake lost their lives post-earthquake due to deterioration of injuries and illnesses caused by physical strain of evacuation. 1,559 casualties have been reported, and 23,246 people remain evacuated.

Aso Region in Central Kumamoto Prefecture experienced great destruction, and in Mashiki Town (of Kamimashiki County), 15% of the residents are still evacuated. As aftershocks continue, number of evacuees increase in the evenings out of concern for further structural damage. Many evacuees continue to sleep in their vehicles. Some houses have been fully destroyed where residents are unable to return home. As temporary housing units will only be built in June at the earliest, evacuation is expected to last long term.

NGOs mobilized in the JPF Emergency Response to Earthquake in Kyushu (as of May 1):

Based on the initial response efforts, and using contributions by corporate, organizational, and individual donors, our member NGOs' relief activities are being funded on a rolling basis as we determine grant provision for their relief actions (*Please see relief action map on the next page):

- Peace Winds Japan (PWJ)
- Association for Aid and Relief, Japan (AAR)
- Japan Asian Association & Asian Friendship Society (JAFS)
- Japan Emergency Network (JEN)
- Japan Association for Refugees (JAR)
- Wakachiai Project (WP)
- Humanitarian Medical Assistance (HuMA)
- Good Neighbors Japan (GNJP)



Kumamoto City Hall serving as an evacuation shelter, with citizens sleeping in the halls ©JPF

JPF Secretariat's Response

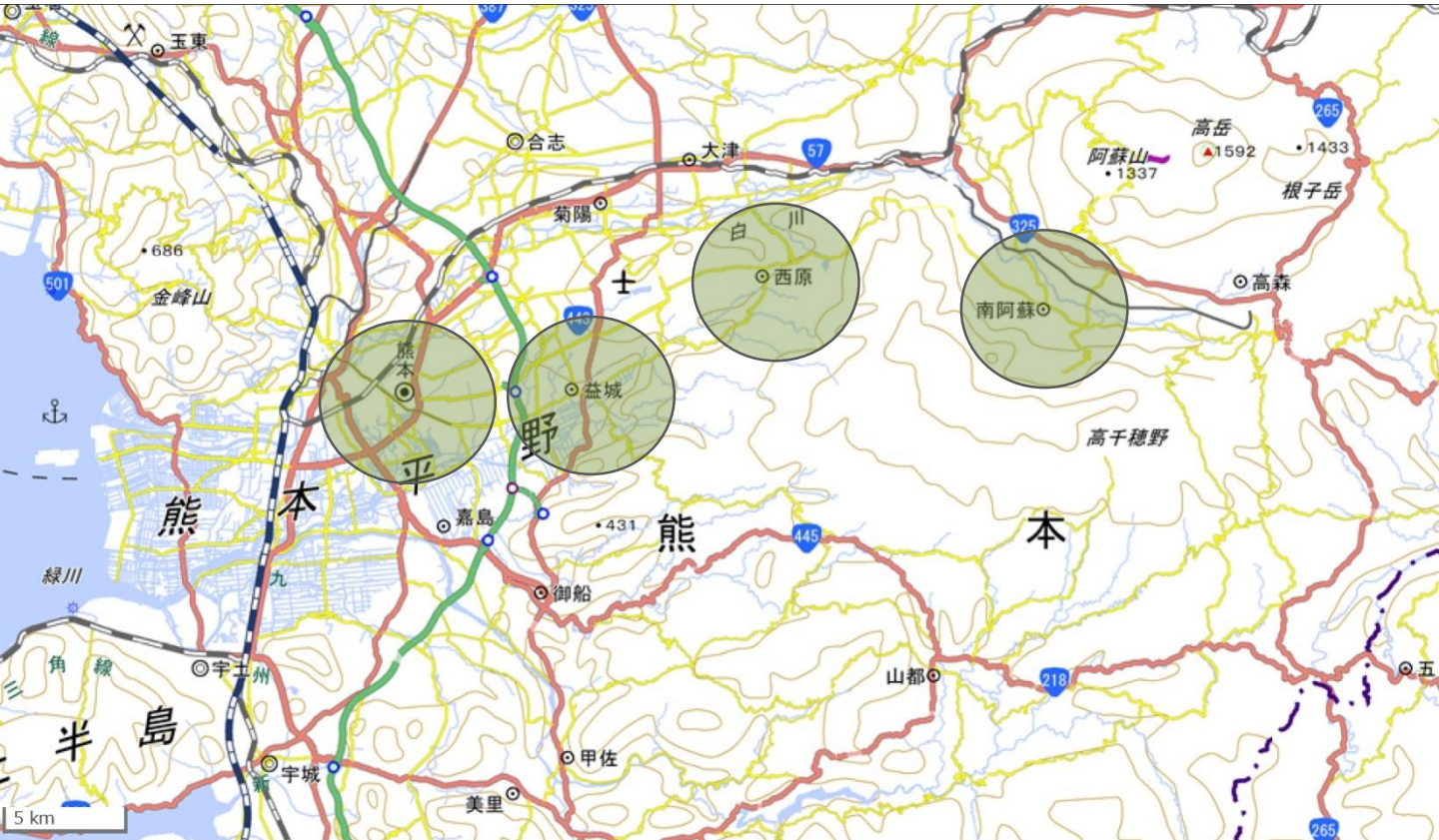
On April 16, the day of the main shock, JPF Secretariat decided on the mobilization of the "Emergency Response to Earthquake in Kyushu." Staff dispatched to Kyushu are sharing information and working in coordination with member NGOs and implementing partners in order to assess the relief system on the ground, needs for coordination among JPF member NGOs, and matching corporate relief goods donation with the needs.

Even though two weeks have passed, some evacuation shelters have not received enough assistance yet while others are starting to close or reorganize so that they can use the space to resume school after the Golden Week holidays. While policies on shelter consolidation and temporary housing are still unclear, news on shelter closures are spreading, perplexing victims and shelter officials and adding to their fatigue. Not enough disaster relief coordination has done within Kumamoto Prefecture area, and some areas have a concentration of assistance while others lack the necessities.

Also, the needs of vulnerable populations have not been comprehensively researched yet, and it is possible that some victims are left out of the relief coverage altogether. JPF strategy is to get a full picture of regions and subpopulations lacking assistance and the issues that may arise in the near future, and to provide information to member NGOs so that they can implement hands-on grassroots emergency humanitarian assistance that is the strong suit of the private sector.

Emergency Response to Earthquake in Kyushu: JPF & Member NGO Activity Map

Updated: May 1, 2016



Map courtesy of the Geospatial Information Authority of Japan website

JH	AAR	CF	JRA	WP	JPF
Kumamoto City: Initial Assessment, Medical Assistance	Mashiki Town: Initial Assessment, Goods Distribution	Mashiki Town, Minamiaso Village: Search & Rescue Mashiki Town: Shelter Assistance	Mashiki Town, Minamiaso Village: Search & Rescue	Mashiki Town: Food Assistance	Kumamoto and Oita Prefectures: Initial Assessment, Coordination
SVA	Kumamoto City, Nishihara Village: Goods Distribution	SCJ	HFHJ	Mashiki Town: Initial Assessment	
Kumamoto City, Mashiki Town: Food Assistance	JEN	Mashiki Town: Child Protection	Mashiki Town, Nishihara Village: Initial Assessment	JAFS	Member NGO activities that are self-funded or from other funding sources
ADRA	Kumamoto City: Bathing Service, Goods Assistance	WVJ	OBJ	Kumamoto City, Minamiaso Village: Food Distribution	
Kumamoto City: Initial Assessment, Medical Assistance	Kumamoto City, Minamiaso Village: Food Assistance	Mashiki Town: Food & Goods Distribution, Child Protection	Mashiki Town: Goods & Food Distribution	GNJP	
PBV	JAR	PWJ	HuMA	Minamiaso Village: Shelter Assistance	[Relief activities funded by JPF grant]
Initial Assessment; Mashiki Town: Food Assistance	Kumamoto City: Initial Assessment	Mashiki Town: Shelter Assistance	Mashiki Town, Minamiaso Village: Initial Assessment	Funding application in progress	
PLAN		Mashiki Town, Minamiaso Village: Search & Rescue	Mashiki Town, Minamiaso Village: Medical Assistance	Preparation and implementation	
Initial Assessment			Mashiki Town: Medical Assistance	Finished implementation	

*Listed above are acronyms with the following official organizational names: AAR = Association for Aid and Relief, Japan; ADRA= ADRA Japan; CF = Civic Force; GNJP = Good Neighbors Japan; HFHJ = Habitat for Humanity Japan; HuMA = Humanitarian Medical Assistance; JAFS = Japan Asian Association & Asian Friendship Society; JAR = Japan Association for Refugees; JEN = Japan Emergency NGO; JH = International Medical Volunteers Japan Heart; JRA = Japan Rescue Association; PBV = Peace Boat Disaster Relief Center; PLAN = Plan Japan; PWJ = Peace Winds Japan; OBJ = Operation Blessing Japan; SCJ = Save the Children Japan; SVA = Shanti Volunteer Association; WP = Wakachiai Project; WVJ = World Vision Japan; JPF = Japan Platform